

Rustomjee[®]
SEASONS
BKC ANNEXE

WELCOME TO
A WORLD
WHERE THERE ARE
NO MONDAY
MORNING BLUES.

**THE MOST
AWAITED LAUNCH
IN THE
MOST EXCITING
NEIGHBORHOOD.
DON'T MISS
THIS OPPORTUNITY.**

The wait is over. What the neighbourhood
has been searching for is here.
A world of indulgence, minutes away from
work, where there is life
to be discovered beyond the 9 to 5.

**A HOME THAT COMES WITH
A SPECIAL ADVANTAGE:
ALL THE RIGHT CONNECTIONS.**

CONNECTIVITY

Western Express Highway: 0.2 km
Bandra - Worli Sea Link: 2.4 km
Domestic Airport: 6.5 km
International Airport: 6.2 km
Eastern Express Highway: 4.3 km
Central Suburbs via the SCLR: 6.5 km

RETAIL

High Street Phoenix, Lower Parel: 11.6 km
Phoenix Market City, Kurla: 2.9 km

CAFES & RESTAURANTS

Masala Library | Yauatcha | Hitchki
Starbucks | Gateway Taproom
Hemant Oberoi | Tuskers
Jyran | Le Bar Diamantaire
Sante Spa Cuisine | Illuminati
Tresind | CinCin

SCHOOLS

2 of the top 3
International Schools in Mumbai:
Dhirubhai Ambani International School &
American School of Bombay
Ascend International School

5 STAR HOTELS

Taj Lands End | Sofitel | Trident | Grand Hyatt

PROPOSED LUXURY MALL

The Maker Mall

IN THE ANVIL FOR BKC: SOME WORLD-CLASS UPGRADES.



JIO WORLD CENTRE

The upcoming convention centre in BKC being built on a 18.5 acre plot by Reliance is slated to be the city's largest convention centre. It will house an International Convention Centre, hotels, two malls including a luxury mall, a performing arts theatre, drive-in, movie theatre and commercial offices.

THE EASTERN EXPRESSWAY CONNECTOR

A 1.6 km elevated corridor between BKC and the Eastern Express Highway, will reduce the travel time between BKC and the Eastern Suburbs.

BULLET TRAIN

A terminus in BKC is planned for the bullet train that will connect Mumbai to Ahmedabad in just 3 hours.

FLYOVER TO WESTERN EXPRESS HIGHWAY

The flyover will connect BKC to the Western Express Highway, decongesting traffic and reducing travel time to the Western Suburbs.

SMART CITY

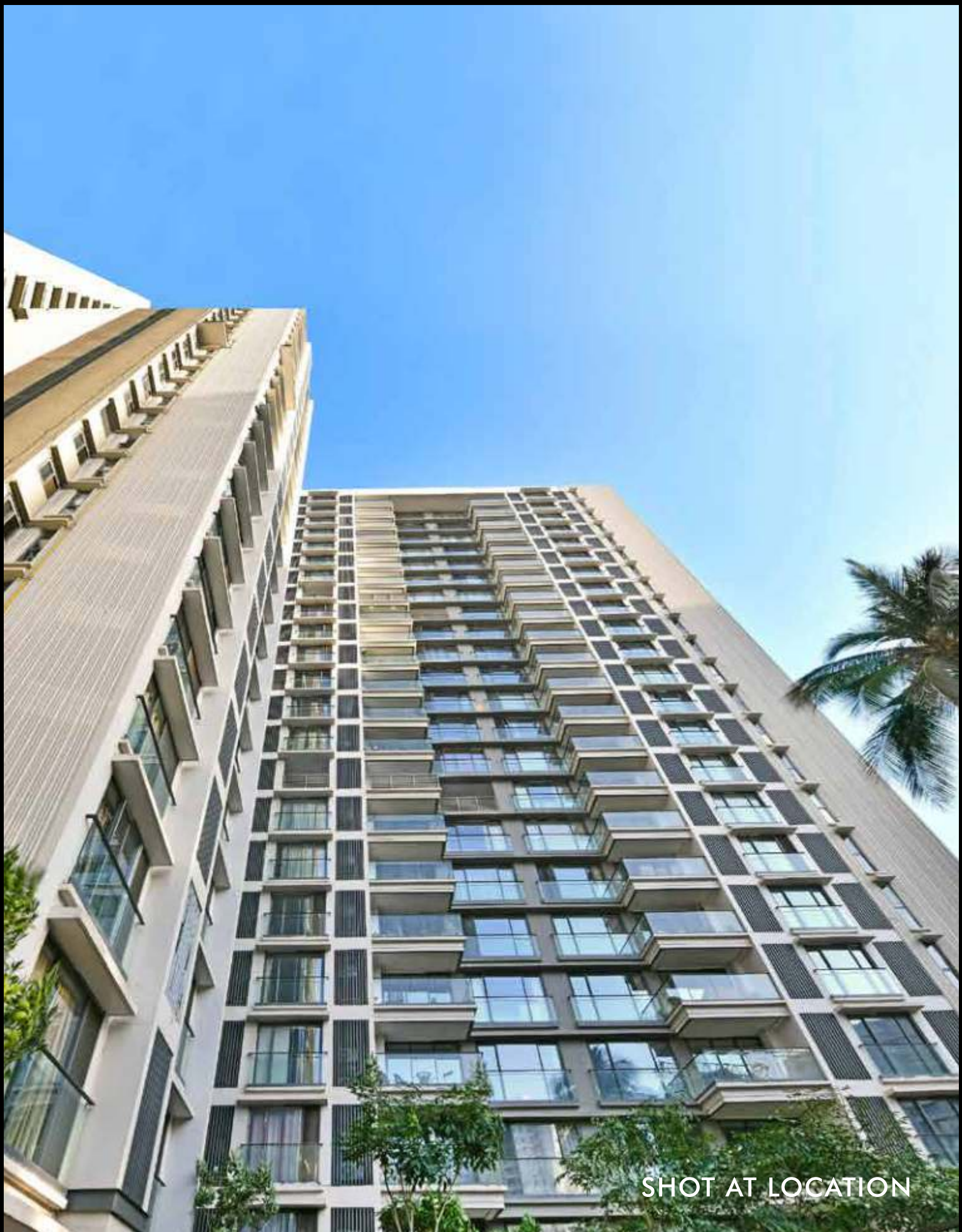
The MMRDA has undertaken a plan to convert BKC into a smart city that will see high-speed Wi-Fi, solar streetlights and CCTV surveillance installed throughout the area.

PROPOSED HYPER LOOP

A new high-speed hyperloop will reduce the travel time between Mumbai and Pune to just 20 minutes.

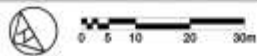
PRESENTING THE LAST
WING OF BKC'S
FINEST GATED COMMUNITY.

THOUGHTFULLY PLANNED
3 BEDROOM RESIDENCES.



SHOT AT LOCATION

LAYOUT PLAN



Disclaimer: The picture, image, visual, or sketch with the information and at the location thereon is only representational and indicative, showcasing an artist's impression of the present proposed development of Rustomjee Seasons. Subject to approval of the respective authorities or in the interest of continuing improvement, the Promoter/Developer reserves the right to add, delete, amend the existing layout, location, plans, specifications, elevations, amenities, features, pictures, images and details without prior notice or obligation.

HOW TO FORGET A HARD DAY AT WORK IN 5 MINUTES FLAT.

READY AMENITIES

	PERFORMANCE STUDIO		SWIMMING POOL WITH FUN POOL FOR KIDS
	GYMNASIUM		COOLING MIST POD
	SPA & SALON		SPECTATORS' BLEACHERS
	OUTDOOR KIDS PLAY AREA		TENNIS COURT
	AROMATIC GARDEN		SENIOR CITIZEN ZONE WITH REFLEXOLOGY PATHWAY
	MINI-THEATRE		INDOOR GAMES ZONE
	FOREST WALK		ALFRESCO OPEN DINING
	OUTDOOR EXERCISE STATION		TODDLERS CREATIVE STUDIO
	JOGGING TRACK		MULTIPURPOSE COURT
	PET PARK		

UPCOMING AMENITIES

	CRÉCHE		MAZE GARDEN
	HEALTH CAFÉ		BANQUET HALL

THOSE WHO TELL YOU
TO VENTURE OUT OF YOUR
COMFORT ZONE DON'T
HAVE 3.8 ACRES OF COMFORT
TO LUXURIATE IN.



PODIUM | SHOT AT LOCATION

THE ONLY THING THAT
MAKES THAT DOUBLE
CHOCOLATE BROWNIE MORE
DELICIOUS? EARNING IT.



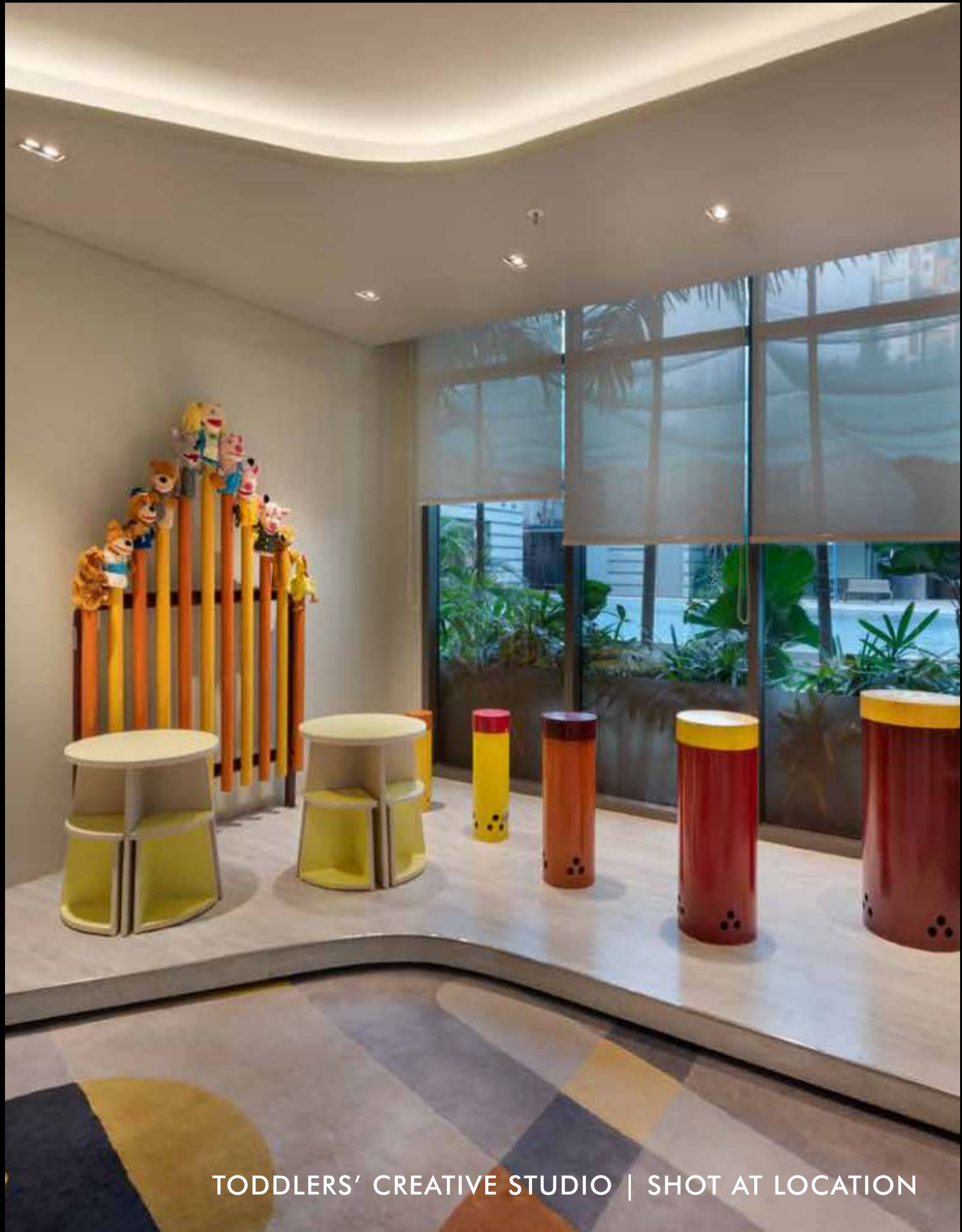
SWIMMING POOL | SHOT AT LOCATION

JUST SOME OF THE THINGS
YOU CAN DISCOVER HERE:
TRANQUILITY. A NEW KIND OF
FLOWER. YOURSELF.



FOREST WALK | SHOT AT LOCATION

ALL YOUR CHILD'S ART
IS BEAUTIFUL, ESPECIALLY WHEN
IT'S NOT ON THE WALLS.



TODDLERS' CREATIVE STUDIO | SHOT AT LOCATION

ANOTHER SET OF PULL-UPS
IS JUST AN EXCUSE TO BE HERE
A LITTLE WHILE LONGER.



GYMNASIUM | SHOT AT LOCATION

THE PERFECT MOTIVATION TO
POWER THROUGH THE UNPACKING
ON MOVING IN DAY.



MINI THEATRE | SHOT AT LOCATION

**JUST WHAT EVERY CEO
NEEDS TO WIN IN
THE BOARDROOM: PRACTICE RUNS.**



MULTIPURPOSE COURT | SHOT AT LOCATION

REMEMBER WHAT
YOU EAT BECOMES YOU.
CHOOSE WISELY
AT THE HEALTH CAFE.



UPCOMING AMENITY: HEALTH CAFÉ | ARTIST'S IMPRESSION

GATSBY WISHED HE HAD ACCESS
TO THIS VENUE.
WE LOOK FORWARD TO ROARING
PARTIES IN THE BANQUET ROOM.



UPCOMING AMENITY: BANQUET HALL | ARTIST'S IMPRESSION

LIVE NEXT DOOR TO
LIKE-MINDED PEOPLE: CEOs OF
FORTUNE 500 COMPANIES,
BIZ MAGAZINE REGULARS, AND
ENTREPRENEURS
INDIA LOOKS UP TO.

SOME OF THE MOST DISTINGUISHED
NAMES IN MUMBAI HAVE CHOSEN
RUSTOMJEE SEASONS AS THEIR ADDRESS.



THERE'S MORE TO EVERY CELEBRATION IN THIS GATED COMMUNITY.

Life here makes sure there are no dull moments. Every occasion turns into a grand celebration and fun is just a way of life. Here are some highlights from the activities that kept this community tightly knit and happy in their own cocoon.



Children's Day was celebrated with fun games and activities. It was a great hit with the little crowd.



Nothing like a good old Christmas Day celebration to uplift spirits and spread some festive cheer.



The residents of Rustomjee Seasons had an exciting day packed with sports, games, cheering and little wins to remember.

AS DECISIONS GO,
THIS ONE IS
GOING TO BE EASIER
THAN YOU'D THINK.

THOUGHTFULLY PLANNED
3 BEDROOM RESIDENCES STARTING
AT ₹ 5.41 CRORES (ALL INCLUSIVE).

IT'S THOUGHTFUL. IT'S **Rustomjee**[®]

CALL: 6111 6111 | WWW.RUSTOMJEE.COM

Site Address: Rustomjee Seasons,
Madhusudan Kalelkar Road, Near MIG Club, Kala Nagar, BKC Annexe, Mumbai - 400 051.

Corporate Office: 702 Natraj, M. V. Road Junction, Western Express Highway,
Andheri (E), Mumbai - 400 069.



MahaRERA Registration No.: Wing D - P51800021028. Listed on the website: <http://maharera.mahaonline.gov.in/>

Disclaimer: All layouts, locations, plans, specifications, designs, elevations, features, amenities, facilities, services, product/equipment type and brand mentioned are indicative of the kind of development proposed in this Project and its finality is subject to the approval of the respective authorities or as required by the Promoter/Developer in the interest of continuing improvement, without prior notice or obligation. Minor variations (+/- 3%) in actual carpet areas may occur as a result of design/construction variances, finishing tolerances and column projections.

The pictures/images and perspective views of the premises/building/layout are an artist's impression of the development and for representational purposes only and are not a part of actual deliverables. Furniture, soft furnishing, gadgets, etc. are not part of the offering. The details, pictures and images contained in the leaflets, brochures or any other printed material does not constitute an offer and/or contract of any type between the Promoter/Developer and the Purchaser.

All transactions in respect of this Project shall be subject to the terms and conditions of the Agreement for Sale to be entered into between the Promoter/Developer and the Purchaser.

The Properties have been mortgaged in favour of IDBI Trusteeship Services Limited (beneficiary: "Piramal") and the buyer will be required to obtain a no-objection certificate prior to entering into any agreement for the sale of any unit in the Project